

Office Tower Floor 22



Emerald-Shapery Center

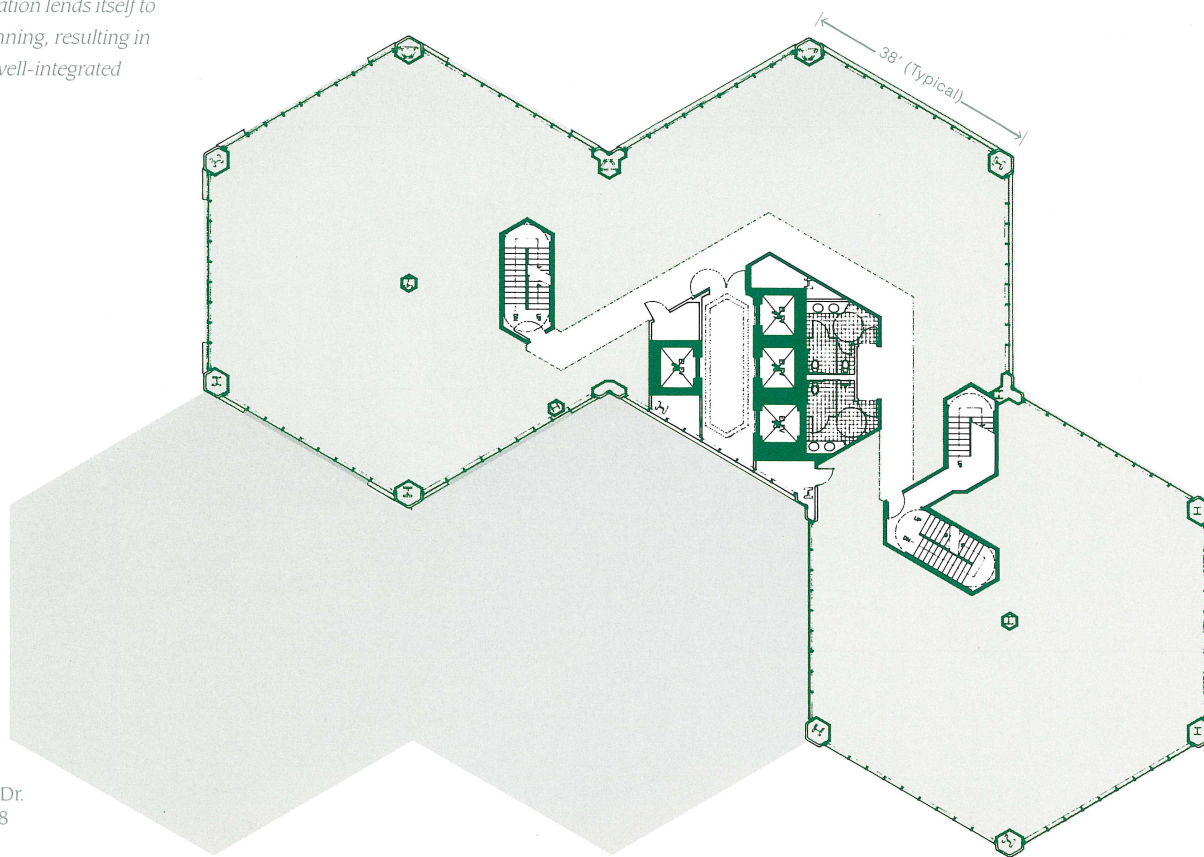
This rendering depicts the office tower's twenty-second floor, which contains 10,506 square feet of rentable space and is serviced by four high-speed elevators.

As the office tower rises above the fifteenth floor, the building's hexagonal "pods" begin to terminate.

These high-rise floors are ideal for tenants who require less space than the low-rise floors offer but desire full-floor identity and security.

The office tower's hexagonal configuration provides numerous benefits: Space efficiency is maximized on each floor, the number of exterior offices with views is dramatically increased, and less space is wasted on corridors and common areas.

This configuration lends itself to innovative space planning, resulting in a highly functional, well-integrated workplace.



Leasing Agent:

Grubb & Ellis Co.
8880 Rio San Diego Dr.
San Diego, CA 92108

Contact: Bill John,
Vince Botticelli
(619) 297-5500



Mullion spacing 3'4"
Typical
0 5' 10' 20'