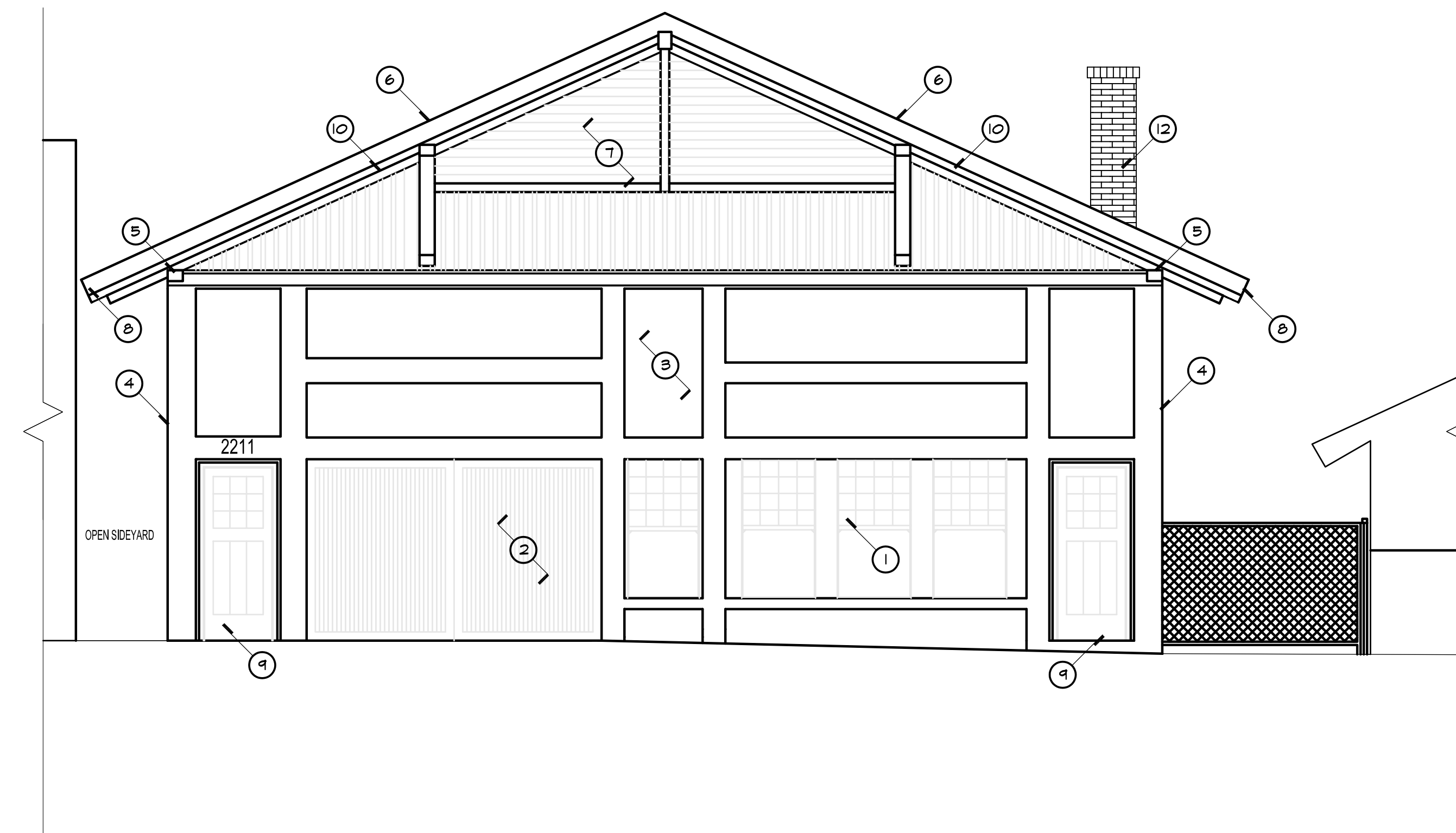


ELEVATION NOTES:

2211 30TH STREET- FIRE STATION NO. 9

- ① THE BUILDING FRONT, SIDE AND REAR WINDOWS HAD MUCH OF THE GLASS BROKEN OUT AND HAD BEEN BOARDED UP FOR OVER 40 YEARS. RAINWATER DECAYED SOME OF THE WINDOWS TO THE POINT THAT A NUMBER OF THE WINDOWS REQUIRED SUBSTANTIAL REPAIR. THE WOOD WINDOWS WERE RESTORED TO THEIR EXACT DESIGN BY COPYING THE FRAMES AND FITTING IN PIECES OF THE EXACT WINDOW STYLE DESIGN AS THE ORIGINAL WINDOW STYLE. THE OLD GLASS PAINS THAT WERE NOT BROKEN WERE REMOVED WHILE THE FRAMES WERE REPAIRED THEN REINSTALLED. NEW MATCHING GLASS WAS INSTALLED IN ALL OF THE WINDOW OPENINGS THAT HAD BEEN BROKEN. THE WINDOW FRAMES AND WOOD TRIM WAS PAINTED TO MATCH THE ORIGINAL COLOR OF THE WINDOW FRAMES. THE WINDOWS AND TRIM WAS PAINTED WITH HIGH-GLOSS SHERWIN-WILLIAMS SW 2847 ROYCRAFT BOTTLE GREEN FROM THE HISTORIC PRESERVATION PALATE UNDER THE DIRECTION AND GUIDANCE OF BRUCE COONS OF THE SAVE OUR HERITAGE ORGANIZATION. PHOTOGRAPHS DATING TO 1914 INDICATED THAT SEVERAL PANELS ON THE FRONT OF THE BUILDING WERE VENEERED WITH BRICK BUT AT SOME LATER DATE STUCCO WAS APPLIED OVER THE VANEER. AN ANALYSIS OF THE AVAILABLE MEANS TO REMOVE THE STUCCO TO EXPOSE THE ORIGINAL BRICK VANEER INDICATED THAT THE BRICKS WOULD BE SUBSTANTIALLY DAMAGED SO NO ATTEMPT WAS MADE TO REMOVE THE STUCCO COAT PUT OVER THE VANEER.
- ② THE DOUBLE DOORS ON THE FRONT OF THE BUILDING WERE SUBSTANTIALLY DAMAGED AS A RESULT OF USE AS THE FIRE STATION AND LATER FOR STORAGE. THE DOOR STRUCTURAL FRAME HAS BEEN RETAINED HOWEVER THE QUALITY OF THE TENANTS THAT COULD BE ATTRACTED WITHOUT A SUBSTANTIAL REFRESH WOULD NOT HAVE ALLOWED FOR THE ECONOMIC VIABILITY OF THE BUILDING OR PROJECT. NEW SKINS WERE PUT ON THE DOORS AND WERE CUSTOM MADE BY HAND BY A LOCAL FINISH CARPENTER IN THE EXACT DESIGN AND MATERIALS AS HAD BEEN DONE ORIGINALLY. ALL OF THE HARDWARE WAS REPAIRED WHERE POSSIBLE AND REPLACED WITH THE SAME STYLE AND DESIGN WHERE NECESSARY.
- ③ ORIGINAL EXTERIOR WALL FINISH ON THE BUILDING WAS STUCCO OVER HOLLOW-CLAY-TILE MASONRY. AS A RESULT OF STRUCTURAL DEFICIENCIES FROM USING ARCHAIC BUILDING MATERIALS AND 96 YEARS OF EARTHQUAKES THE STUCCO SURFACE ON THE BUILDING WAS CRACKED AND DETERIORATED IN A NUMBER OF PLACES. THE SURFACE WAS PRESSURE WASHED, STUCCO ADHESIVE WAS APPLIED, AND THEN A MEDIUM-SAND FINISH COAT (COLOR-TECH EXTERIOR PREMIUM STUCCO) WAS INSTALLED PER INDUSTRY STANDARDS. BILL HOLTZ, CITY INSPECTOR, VIEWED THE APPLICATION. THE STUCCO SURFACES WERE REPAINTED WITH SHERWIN-WILLIAMS DEEP-BASE SW 6374 TORCHLIGHT (INSERT PANELS) AND SHERWIN-WILLIAMS DEEP-BASE SW 6372 INVITING IVORY (PILASTERS, SILLS, & HEADERS). THE COLORS WERE SELECTED FROM THE HISTORIC PRESERVATION PALATE UNDER THE DIRECTION AND GUIDANCE OF BRUCE COONS OF THE SAVE OUR HERITAGE ORGANIZATION.
- ④ ANY EXPOSED BROKEN MASONRY WAS REPAIRED WITH ORIGINAL MASONRY FOUND ON-SITE. SUCH MASONRY REPAIRS INCLUDE RE-POINTED GROUT THROUGHOUT WITH GROUT COLOR MIXED TO MATCH THE ORIGINAL POINTING.
- ⑤ STRUCTURAL REPAIRS INCLUDED MEETING THE CITY OF SAN DIEGO'S UNREINFORCED MASONRY CODE UPGRADES PER SECTION 145.0410 OF THE SAN DIEGO MUNICIPAL ORDINANCE - TENSION ANCHORS AT THE ROOF-TO-WALL CONNECTION AND PARAPET BRACES WERE ADDED.
- ⑥ NEW ROOFING - 30 YEAR LAMINATE ASPHALT SHINGLES WERE INSTALLED CHATEAU GREEN COLOR OVER NEW PLYWOOD SHEATHING ADDED FOR STRUCTURAL REINFORCING. THE NEW SHINGLES WERE OF SIMILAR STYLE AND DESIGN AS THE ORIGINAL ROOFING SHINGLES.
- ⑦ PAINT ON THE WOODEN SURFACES WAS DONE WITH HIGH-GLOSS SHERWIN-WILLIAMS SW 2847 ROYCRAFT BOTTLE GREEN. THE COLOR WAS SELECTED FROM THE HISTORIC PRESERVATION PALATE UNDER THE DIRECTION AND GUIDANCE OF BRUCE COONS OF THE SAVE OUR HERITAGE ORGANIZATION. PAINT ON THE STUCCO SURFACES WAS SHERWIN-WILLIAMS DEEP-BASE SW 6374 TORCHLIGHT (INSERT PANELS) AND SHERWIN-WILLIAMS DEEP-BASE SW 6372 INVITING IVORY (PILASTERS, SILLS, & HEADERS). SELECTED FROM THE HISTORIC PRESERVATION PALATE ALSO UNDER THE DIRECTION AND GUIDANCE OF BRUCE COONS OF THE SAVE OUR HERITAGE ORGANIZATION.
- ⑧ INSTALLED NEW 26 GAUGE "BUTTERMAN'S CHOICE" ALUMINUM GUTTERS AND DOWNSPOUTS - ANODIZED IN ROYAL BROWN #05 COLOR, 5K STYLE TO MATCH ORIGINAL GUTTERS THAT HAD BEEN SUBSTANTIALLY DESTROYED.
- ⑨ REPLACE BOTH MAN-DOORS AT THE ENTRY TO MATCH THE SINGLE EXISTING ORIGINAL DOOR, THAT WAS TOO DETERIORATED TO REUSE, WITH MATCHING FRAMING, TRIM AND GLAZING. WOOD FINISHES ARE HONEY-COLORED NATURAL STAINS AND VARNISHES.
- ⑩ REPAIRED AND PAINTED GABLES, GABLE RAFTERS, EAVES AND OVERHANGS. PRESSURE WASHED ALL SURFACES, THEN REPAIRED WOOD SURFACES WITH EPOXY FILLERS. REPLACED SEVERAL OVERHANG SHEATHING BOARDS WITH MATCHING ORIGINAL BOARDS FOUND ON-SITE.
- ⑪ INSTALLING "FIRE STATION NO. 9" LETTERING AT THE ORIGINAL LOCATION. LETTERING TO BE GOLD COLORED FORMED PLASTIC TO MATCH THE ORIGINAL LETTERING AS CLOSE AS POSSIBLE - THE FONT THAT "HELVEITICA MED. CONDITION".
- ⑫ EXISTING CHIMNEY TO BE RETROFITTED. THE APPEARANCE IS TO BE UNCHANGED.



WEST ELEVATION

SCALE: 1/4"=1'-0"